

EETI WinCE Touch Driver Installation Guide

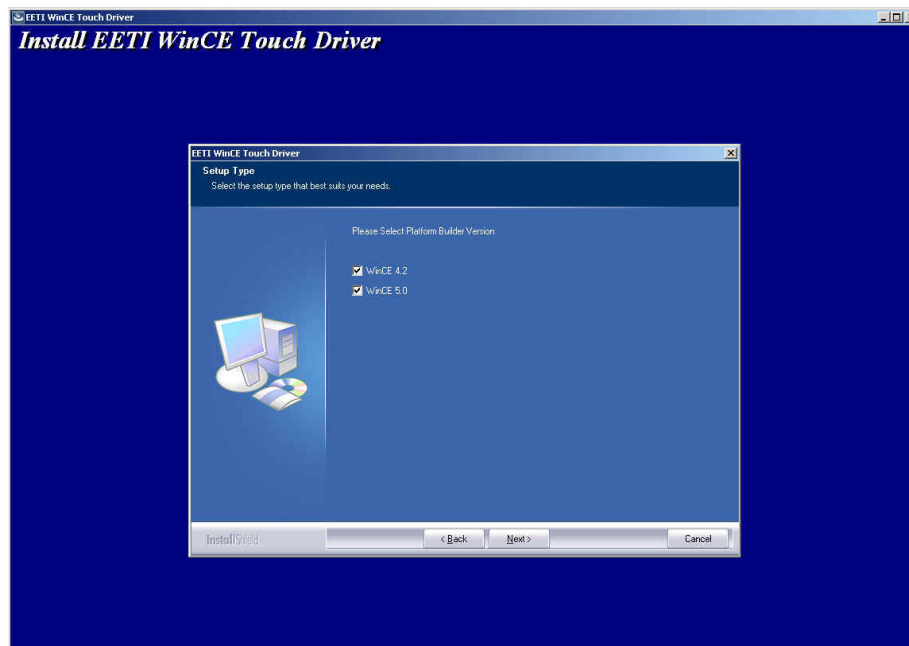
Version: 2.1.2.2807

Operation System: Windows CE .NET (CEPB 4.0/4.1/4.2) 5.0

Release Date: 04-11-2014

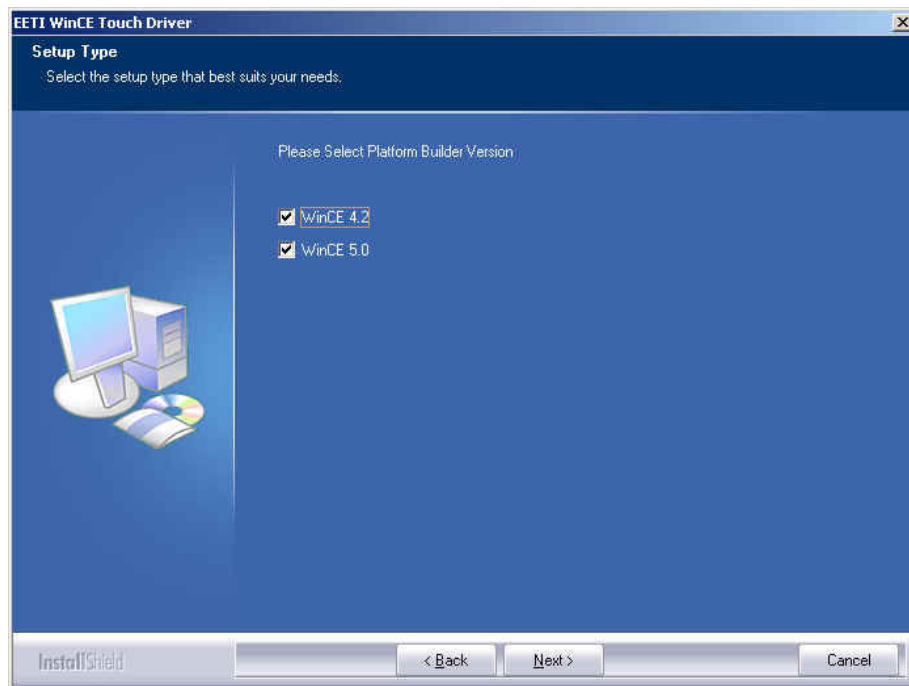
Before you execute setup.exe, please make sure your platform builder is not launched.

1. Execute setup.exe, you will see the installation window.

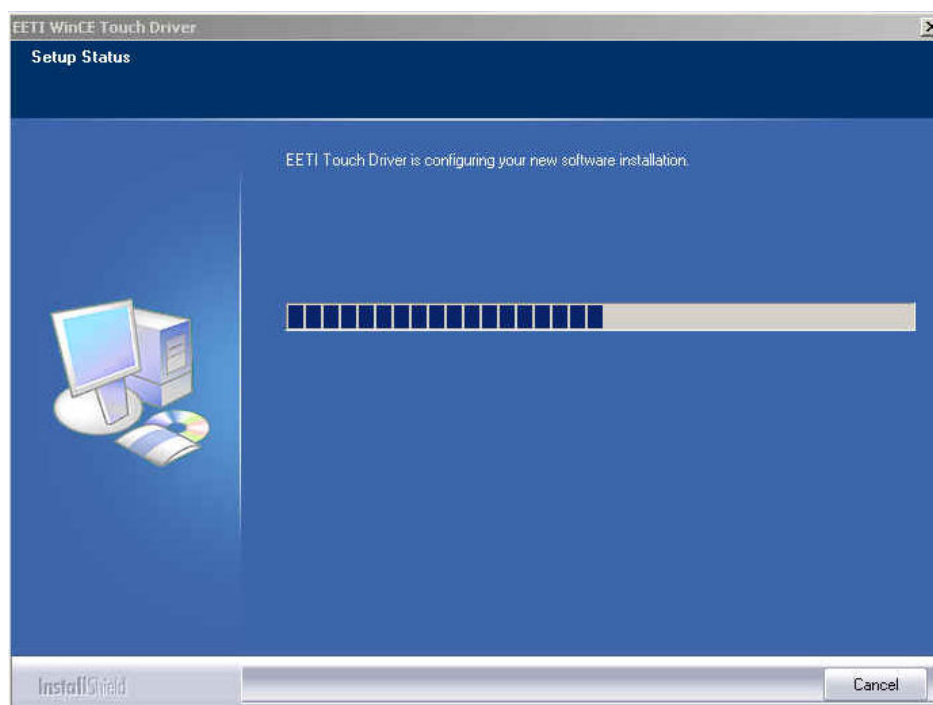


2. Select the platform builder version(s) you want to install.

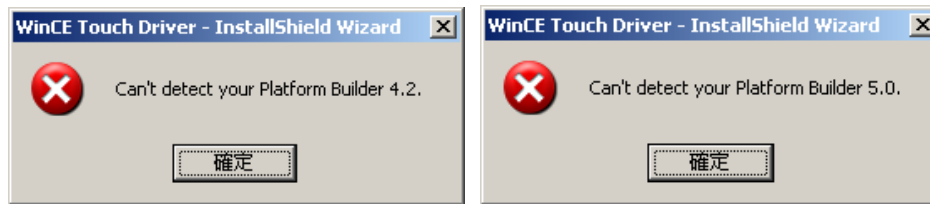
EETI WinCE Touch Driver Installation Guide



3. Press Next and you will see the process

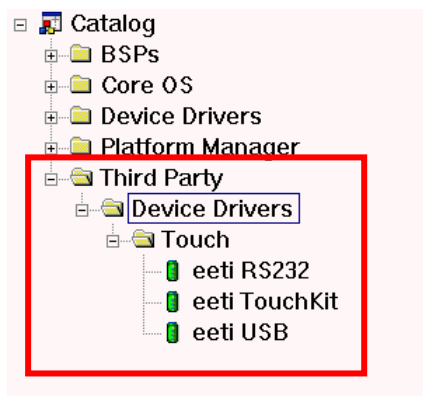


4. If this message occurs, please check whether you have installed platform builder in your operating system.



5. Launch platform builder Windows CE4.2/5.0, check whether there will be three new catalog items under Third Party → Device Drivers → Touch.

Note: If you can not see the newly added catalogs, try to press mouse right button and select Refresh Catalog



6. Open your workspace. Add catalog items into your OSDesign.

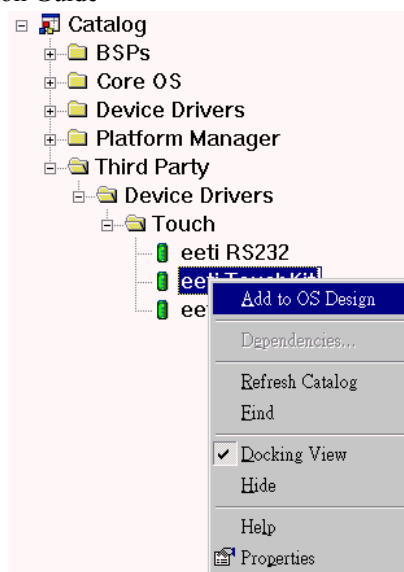
To add catalog into your OSDesign, simply press right button and select Add to OSDesign

[For USB Controller]

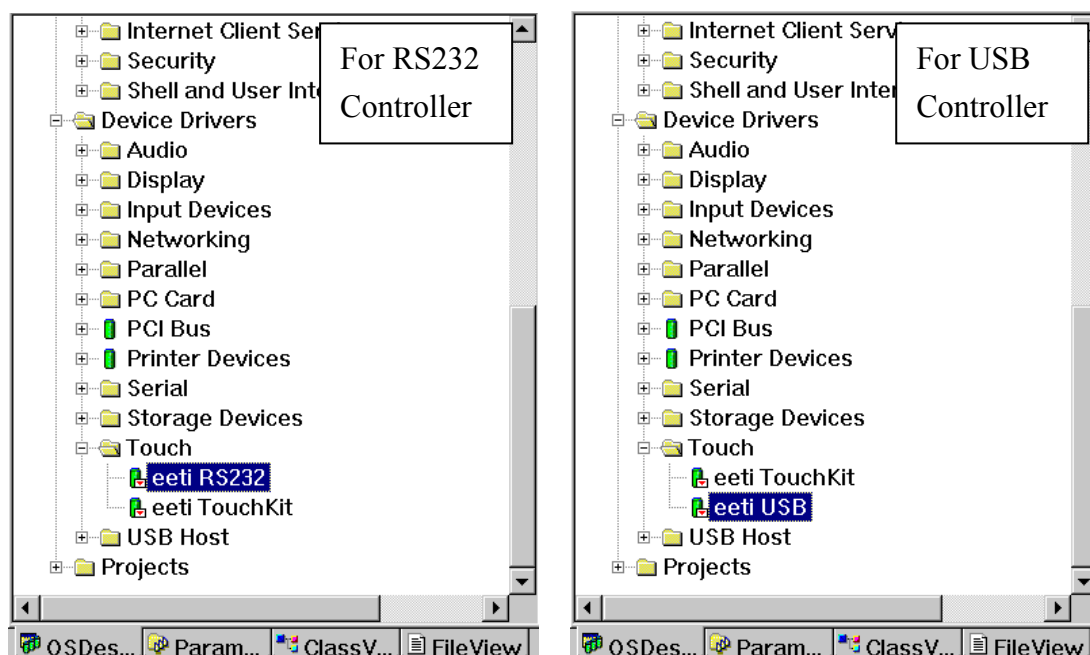
Add **eeti TouchKit** and **eeti USB** into your OS Design

[For RS232 Controller]

Add **eeti TouchKit** and **eeti RS232** into your OS Design



7. After you add catalog items, you will find the items inside your workspace.



8. Select Build OS → Make Run-Time Image (Build → Make Image for CE4.2) to build the image.

Notes:

1. [For USB Controller] Select the UHCI or OHCI USB Host Controller driver into your platform which supported by the target device. Check the USB mouse can go well at the same port. Select the "Mouse" into your platform. This can be found in: Catalog Item Window, add "Core OS -> Windows CE devices -> Shell and User Interface -> User Interface -> Mouse"

EETI WinCE Touch Driver Installation Guide

2. [For RS232 Controller] Select the COM port which touch device is using, please modify eeti232.reg

[HKEY_LOCAL_MACHINE\Drivers\BuiltIn\TouchKit1]

"Dll"="TouchKit.dll"

"Order"=dword:FF

"Prefix"="TKT"

"Index"=dword:00000001

"Context"=dword:1; → This is the COM Port setting.

3. If you wish to uninstall the driver, please remove the component in your OS Design and execute setup.exe again.

Driver Registry Settings:

Settings for eetiTool.reg:

[HKEY_LOCAL_MACHINE\Drivers\TouchKit]

Registry Key	Type	Description
RBEnable	dword	Enable auto-right click button function of the touch driver. RBSIZE = 0 can disable auto right button RBSIZE = 1 can enable auto right button
RBSIZE	dword	set scale that will be treated as the same point, $x\text{-coordinate regin(pixel)} = (RBSIZE / 65535) * x\text{-coordinate resolution}$ set RBSIZE = 0 can disable right button
RBTIME	dword	set how long the same point pressed will treated as right button. The unit is 10^{-7} second.
FLAGS	dword	set 0x1 software filter enable set 0x3000 update EEPROM function enable set 0x100 to enable the check rotation function
SoundType	dword	SoundType = 0 is no sound SoundType = 1 is Beep in touch down. SoundType = 2 is Beep in lift off.

Settings for eeti232.reg:

[HKEY_LOCAL_MACHINE\Drivers\TouchKit]

Registry Key	Type	Description
Baud	dword	RS232 baud rate setting: Baud = 1C200 for 115200



禾瑞亞科技股份有限公司
eGalax_eMPIA Technology Inc.

EETI WinCE Touch Driver Installation Guide

		Baud = E100 for 57600 Baud = 4B00 for 19200 Baud = 2580 for 9600
--	--	--